

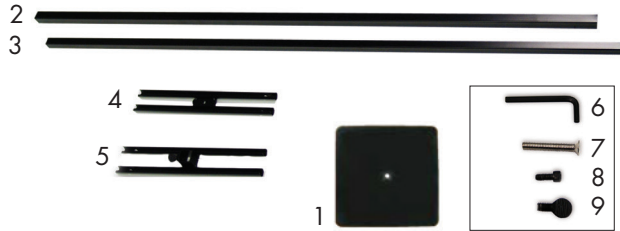
Everyday Banner Display

Scan to view Product Instructional Video or visit:
www.creativedisplaysite.com/Everyday.html



Product Parts

- 1 - Base Plate
- 2 - Base Pole
- 3 - Top Pole
- 4 - Top Graphic Fixture
- 5 - Lower Graphic Fixture
- 6 - Hex Wrench
- 7 - Silver Hex Bolt
- 8 - Black Bolt
- 9 - Thumbscrew



Display Set-Up

Step 1

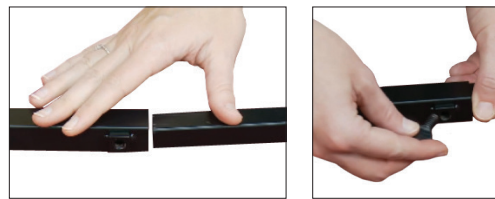
Place the parts on a clean flat surface.

Attach the Top Graphic Fixture (4) to the Top Base Pole (3). Thread the Black Bolt (8) through the hole located in the center of the fixture and turn clockwise with the Hex Wrench (6) until fully tightened.



Step 2

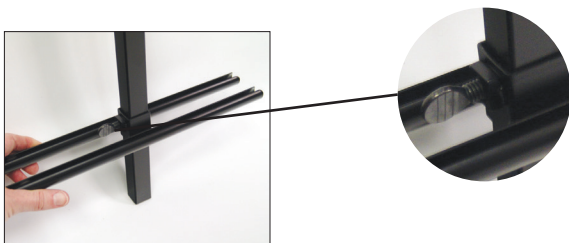
Insert the Top Pole (3) into the larger Base Pole (2) with the threaded end towards the top. Secure the poles by inserting the Thumb Screw (9) into the receptacle at the top of the base pole and turn clockwise until fully tightened.



Step 3

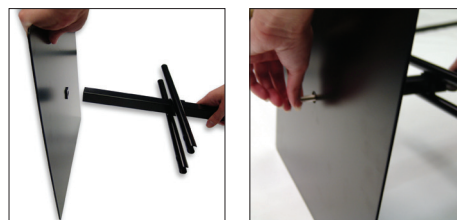
Slide the Lower Graphic Fixture (5) on to the Base Pole (2) with flanged edge facing the top of the pole.

Secure the fixture to the pole approx 8-12 inches from the bottom by tightening the Thumb Screw on the fixture.



Step 4

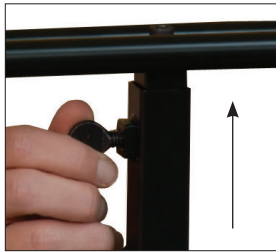
Insert the raised area of the Base Plate (1) into the bottom of the Base Pole (2). secure by inserting the Silver Hex Bolt (7) through the bottom of the Base Plate (1) and into the threaded receptacle in the base pole (2). Tighten with Hex Wrench (6) until secure.



Display Set-Up Continued...

Banner with Pole Pocket Set-Up

Loosen the Thumb Screw (9) in the Base Pole (2) and Raise the Top Pole (3) to your desired height & Tighten Thumb Screw (9).



Insert your wooden dowels into the sewn pockets of your graphics.



Slide your graphic into the Top Graphic Fixture (4) until it is centered.



Loosen the Lower Graphic Fixture (5) by turning the Thumb Screw counter clockwise and raise it so that you can comfortably slide the bottom of your graphic into the fixture. Slide the bottom of your graphic into the fixture until the graphic is centered and allow the Lower Graphic Fixture (5) to lower - do not tighten the screw at this time.



Repeat the previous steps to install the second graphic.

Once both banners are set, reach between the graphics and while providing downward pressure on the Lower Graphic Fixture (5), tighten the Thumb Screw.

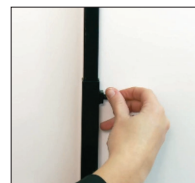
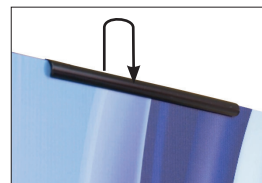
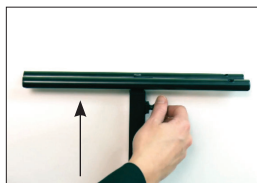


Rigid Substrate Set-Up

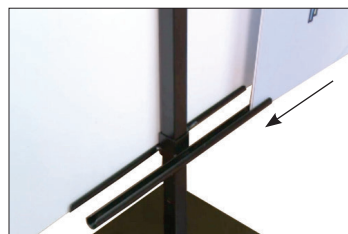
Adjust the Lower Graphic Fixture (5) to the desired height and tighten by turning the Thumb Screw on the fixture clockwise.



Loosen screw on the Base Pole (2) and raise to the Top Pole (3) until the top fixture captures the rigid substrate. Once your graphic is secured in both grooves tighten the Base Pole Thumb Screw by turning clockwise.



To install your second rigid substrate - slide it into both Graphic Fixture (4 &5) grooves until it is centered.



Storage

Store in a cool dry location.

Care

To clean, wipe with damp cloth.